

# SECTION 5 PARTS LIST

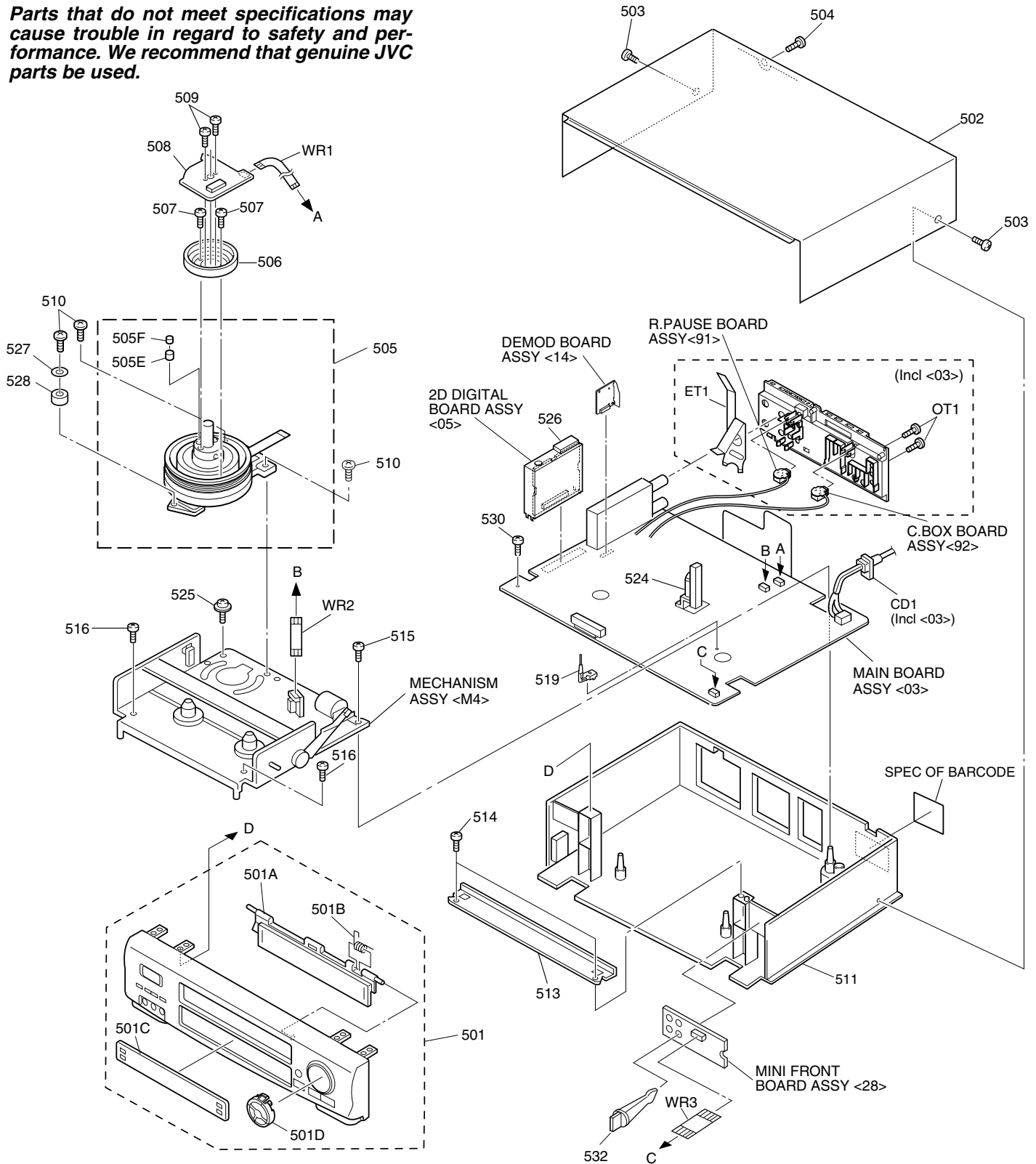
## SAFETY PRECAUTION

Parts identified by the  $\triangle$  symbol are critical for safety. Replace only with specified part numbers.

### 5.1 FINAL ASSEMBLY <M2>

#### BEWARE OF BOGUS PARTS

*Parts that do not meet specifications may cause trouble in regard to safety and performance. We recommend that genuine JVC parts be used.*



# ▲ REF No. PART No. PART NAME, DESCRIPTION

# ▲ REF No. PART No. PART NAME, DESCRIPTION

\*\*\*\*\*

**FINAL ASSEMBLY <M2>**

▲ 501	LP10289-065A	FRONT PANEL ASSY
501A	LP20868-035A	CASSETTE DOOR
501B	PQ46448	TORSION SPRING
501C	LP20869-095A	DISPLAY WINDOW
501D	LP30649-002A	ORNAMENT
▲ 502	LP10013-021D	TOP COVER
503	QYTDSF3010M	SCREW,X2 TOP COVER(SIDE)
504	QYTDSF3010M	SCREW,TOP COVER(REAR)
505	LP20981-010A	DRUM SUB ASSY
505E	LP40323-001A	CONTACT
505F	LP30004-014A	COMPRESSION SPRING
506	PDZ0179-1-4	ROTOR ASSY
507	QYSPSP3006Z	SCREW,X2
▲ 508	QAR0169-002	STATOR ASSY
509	QYSPSPH2606Z	SCREW,X2
510	QYTDST2610Z	SCREW,X3 DRUM
▲ 511	LP10108-012E	BOTTOM CHASSIS
513	LP30312-001B	BRACKET(CHASSIS)
514	QYTDSF3010Z	SCREW,X2
515	QYTDSF4012Z	SCREW,MECHA
516	QYTDSF3010Z	SCREW,X2 MECHA
519	LP40407-001A	KNOB ASSY
524	LP40253-001B	STOPPER
525	PQ40413	SPECIAL SCREW,MECHA
526	LP30002-088B	SPACER,SHIELD FRAME
527	QYWWS267505Z	WASHER,DRUM
528	LP30017-021A	SPACER,DRUM
530	QYTDSF3010Z	SCREW,MAIN
532	LP40628-001B	PC SUPPORT,MINI FRONT
WR1	QUQ212-0518CG	FFC WIRE,DRUM CN3002
WR2	WJT0005-002A	E-CARD WIRE,A/C HEAD CN2001
WR3	QUQ112-0914CG	FFC WIRE,FRONT CN7001